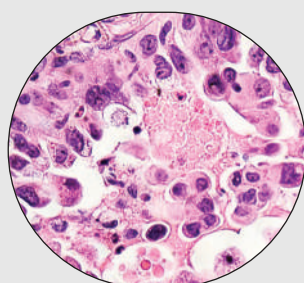
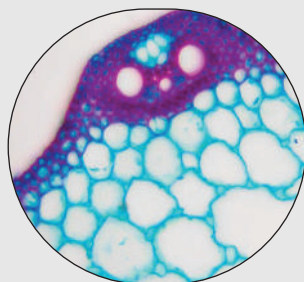


TRINOCULAR TISSUE CULTURE MICROSCOPE

METZ – 6000 TTCM FL (MAX)



SPECIFICATIONS

Optical System	Color Infinity corrected Optical system
Observation	Trinocular head, 45 inclined, interpupillary distance adjustment range 54–75mm, one eyepiece tube with ± 5 diopter adjustment light splitting ratio: binocular 100%; binocular 0%/trinocular 100%
Eyepiece	PL10X22mm high eye-point plan eyepiece.
Objective	Long working distance infinity plan fluorescence objective. LWD 4X/0.13/WD18.52, LWDPH10X/0.30/WD7.11, LWDPH20X/0.45/WD5.91, LWDPLF40X/0.65/WD1.61. Phase contrast kit with centering telescope and green filter
Nosepiece	Quintuple nosepiece revolving on ball bearings.
Stage and Accessories	160x250mm platform; Mechanical stage, move range 120x78mm; auxiliary stage 70x180mm; Slide Glass holder; Metal stage with slot; Terasaki holder; Holder for $\phi 35$ mm petri dish vessel.
Microscope Body	Coaxial focus system, coarse focus distance 25mm, fine focus precision 0.002mm, with degree of tightness adjustment, built-in 90–240V wide voltage transformer.
Reflected fluorescence	U-LH100HG mercury lamp house, center and focus adjustable. With mirror, center and focus adjustable.
Illumination	Centering objective for mercury lamp. Optical band pass filter cubes: UV1/B1/G130ND25 attenuation pad. The light-filter system of main body: 2 excitation light waves, B (blue filter), G (green filter) and O (transmitted light).
Transmitted	Critical illumination, 6V/30W halogen bulb, center presetting, brightness adjustable. Iris aperture diaphragm
Condenser	N.A.0.3 long working distance condenser, W.D.72mm,.
Filters	LBD color temperature change filter, IF550 contrast green filter.
Accessories	Fuse 2 no.s, instruction manual.

METZER OPTICAL INSTRUMENTS PVT. LTD.

C-21, GURU NANAK NAGAR, JUNCTION ROAD, MATHURA – 281001

www.metzlab.com
 info@metzlab.com
 +91 9897000955